

# TBS-EC

Sustainability and technology  
for the most exigent spaces





## ▶ What is a TBS-EC unit? ▶▶

The new TBS-EC range is the TROX's new TBS-EC units are TROX's new air handling units including EC fan-motor set. Available in a compact size whose maximum height varies from 325 to 475 mm (according to the selected unit).

These units have been specially designed for installation in low profile ceilings with airflows up to 5,000 m<sup>3</sup>/h. They can include a large variety of sections and accessories.

Each unit is tailor-made configured according to customer needs and project specific requirements. Moreover all of its components comply with high quality standards that a company such as TROX requires of its suppliers.

These units are suitable for all the installations with special requirements, such as: offices, hospitals, laboratories, etc. TROX TBS-EC units are provided with electronically commutated motors (ECM) which ensure higher energy efficiency performance for installations.

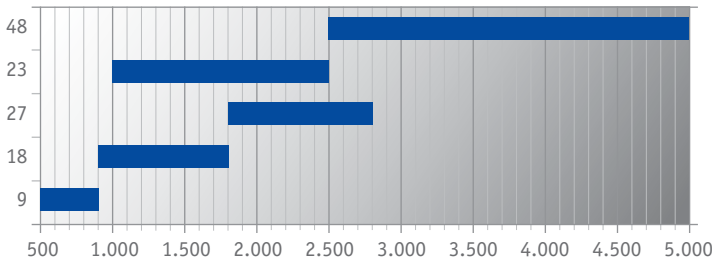


TBS-EC is the result of TROX's determination towards energy efficiency applied in new technologies and materials, together with its involvement and care for the environment.

## Dimensions and air flows

TBS-EC is available in 5 standard sizes for an airflow range up to up to 5,000 m<sup>3</sup>/h. Depending on sections and accessories, these units can get different dimensions.

Dimensions in accordance to catalogue:



TBS-EC: Air volume flow range depending on model. Q in m<sup>3</sup>/h.

## Configuration, calculation and selection

YAHUS by TROX configures, calculates and selects TBS-EC units.

This simple-interface software has been developed to ease the selection of components using intuitive drop-down menus.

It provides a wide offer of fans, coils, sound attenuators, filter sections and every additional one is configurable by users. YAHUS can run under Windows operative system or environment.

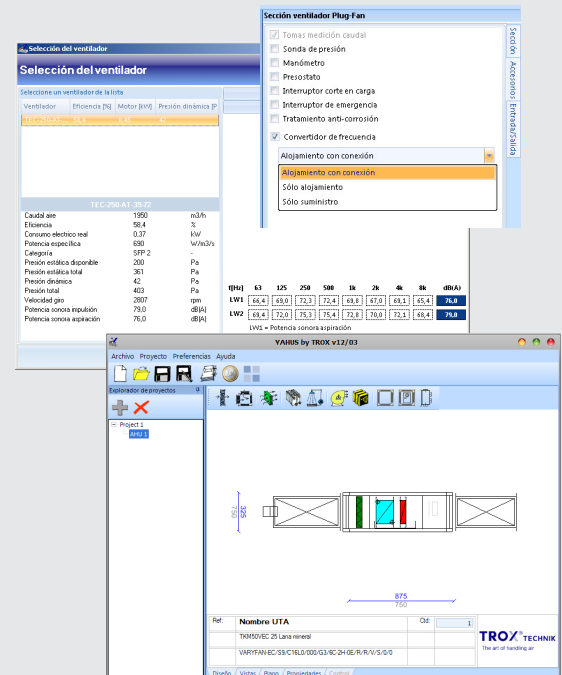
Main features:

- Predefined or user-customized templates to speed up configuration of the units.
- Real-time design.
- Possibility to export diagrams to “.dxf” format.
- Multiple air handling unit views.

Any requests for the YAHUS software by TROX – and new releases – are available on TROX España website: [www.trox.es](http://www.trox.es), in the Product/Software section. Or please contact the TROX sales office responsible of your geographical area.

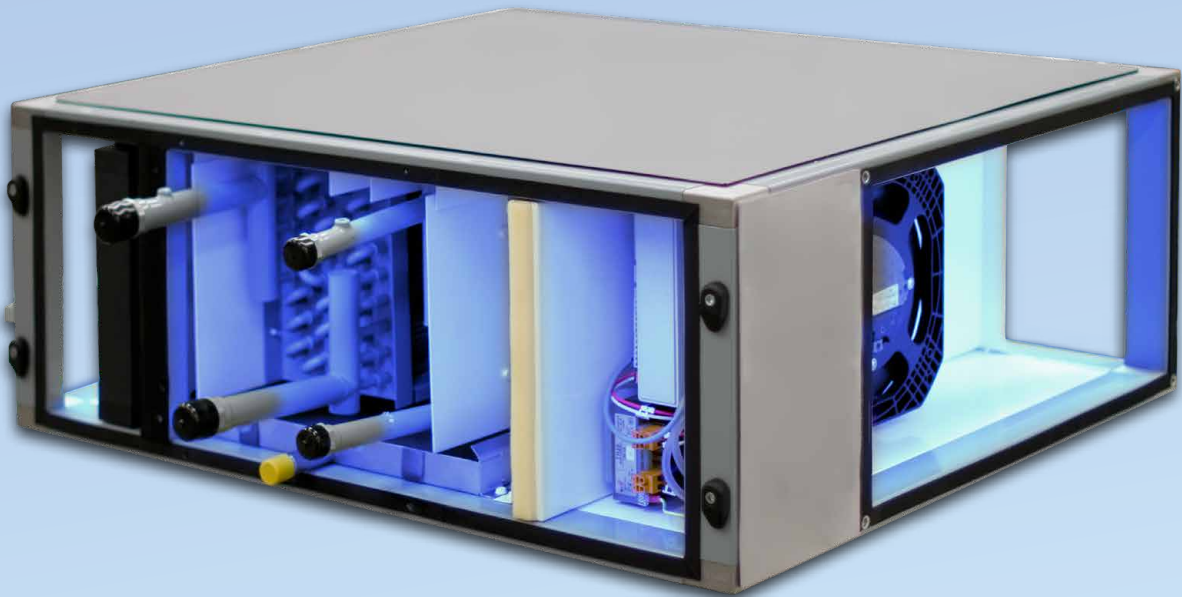


For more information about TBS-EC dimensions and designs, please consult the technical leaflet and Quick Selection Tables.



YAHUS by TROX guarantees a quick and reliable selection of TBS-EC units.

## Sections and accessories



### Multileaf dampers

- Dampers with an aerodynamic profile for an optimal air flow control.
- As an option, one damper for the air inlet or with mixing section (double air flow damper).



### Mixing section with attenuator and primary air flow controller

- Additionally on return with mixing section, silencer for the secondary air and/or air volume flow controller (constant or variable).



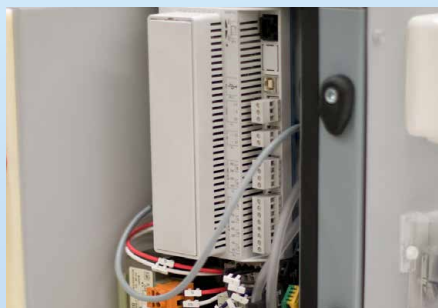
### Air filtration

- Optionally panel filters with efficiency class G3, G4 or M6.



### Supply volume flow control

- Manual controller for a basic control.
- Control based on constant differential pressure or air flow, on request.
- Optionally, TROX CONTROL System integrated.



### TROX CONTROL System

- For temperature, pressure and indoor air quality control.
- Compatible to integrate in the the building management system (BMS) via different protocols as: ModBus, BACnet, LONWorks.



### Pressure control for laboratories and clean rooms

- It is possible to include an EASYLAB controller for air flow and differential pressure control in laboratories and clean rooms.



All TBS-EC components are accessible and removable from one side.



## Fans

- Plug-in fans with turbine formed by aerodynamic profile louvers connected directly to EC motors.



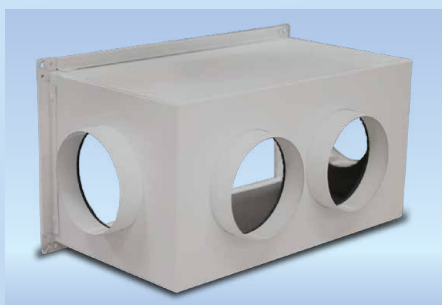
## Cooling and heating coils

- Water coils made of copper tubes and aluminium fins.
- Electric coil for heating, as an option.



## Sound attenuation

- With attenuator splitters (return and supply).
- Very low pressure drop.
- High attenuation of fan's sound spectrum.



## Manifolds for air distribution

- Air supply section including four manifolds for an optimum air distribution.



## Casing

- Built with galvanized steel profiles finished in grey enamelled.
- With cast aluminium corners.



## Pre-painted exterior sheet

- High resistance against corrosion.
- Units will be supplied with casing finished in grey colour RAL 9006 as standard, other constructions upon request.





# TROX<sup>®</sup> TECHNIK

The art of handling air

## TROX España

Pol. Ind. La Cartuja

E-50720 Saragossa - Spain

Tel: +34 976 50 02 50

Fax: +34 976 50 09 04

[www.trox.es](http://www.trox.es)

[trox@trox.es](mailto:trox@trox.es)