

# Low Leakage Steel Door

Type ST-XT



**TROX<sup>®</sup> TECHNİK**

TROX South Africa (Pty) Ltd.  
10 Wigford Road  
Masons Mill  
Pietermaritzburg

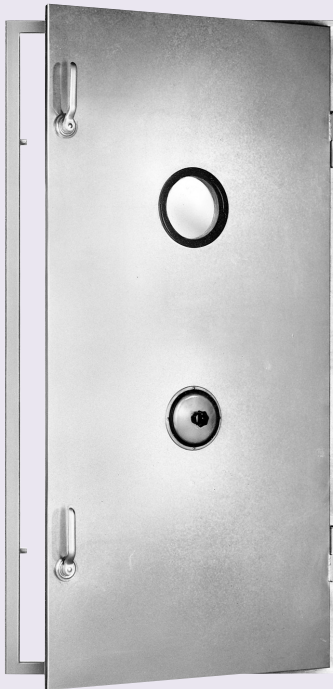
Tel. +27 (0)33 398 1006  
Fax. +27 (0)33 398 1100  
email : [pmb@troxsa.co.za](mailto:pmb@troxsa.co.za)  
Website: [www.troxsa.co.za](http://www.troxsa.co.za)



# Contents · Description

Description	2
Construction	3
Standard Sizes · Installation Details	5
Product Range	6
Accessories · Technical Data	7
Order Details	8

ST · STV  
XT · XTV



ST-D · STV-D  
XT-D · XTV-D



Low leakage steel doors are designed for use in air conditioning systems, plant rooms, filter plenums, air handling units etc. If exposed to the weather the steel doors should be protected with anti-corrosion paint. The stable construction guarantees a very low leakage even with high pressure differentials. Good sound insulation is also achieved in the construction with additional acoustic treatment (X versions).

## Type ST · STV · XT · XTV

### ST

- Double skinned door in galvanised sheet steel with rockwool insulation: door thickness  $d$  approx. 44 mm
- Installation frame (angled section or U-channel) with galvanised builders cleats welded in position
- Double lever locking devices (2 off) diecast aluminium, enables operation from both sides
- APT rubber seal, temperature resistant up to 90 °C
- Maximum pressure differential 1000 Pa (pressure should push the door against the frame); leakage 2 m<sup>3</sup>/h

### STV

As for type ST, but:

- Reinforced door construction
- Maximum pressure differential 2000 Pa (pressure should push the door against the frame); leakage 4 m<sup>3</sup>/h

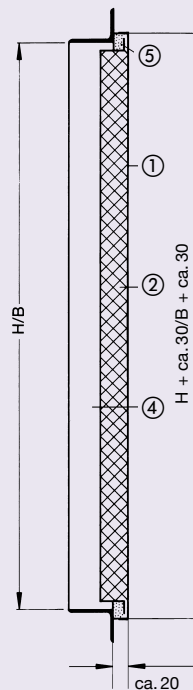
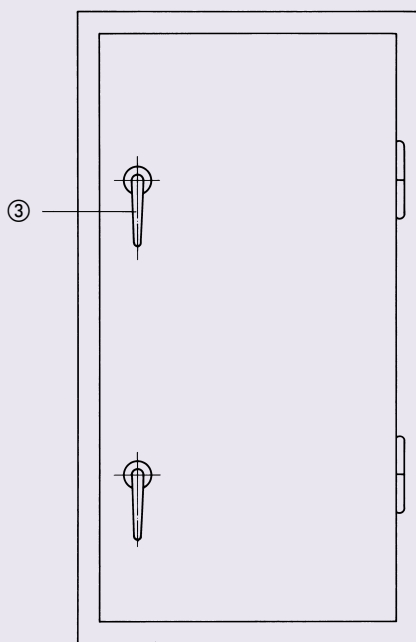
### XT

As for type ST, but also with additional acoustic treatment

### XTV

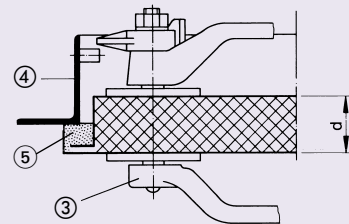
As for type STV, but also with additional acoustic treatment

## Type ST · STV XT · XTV

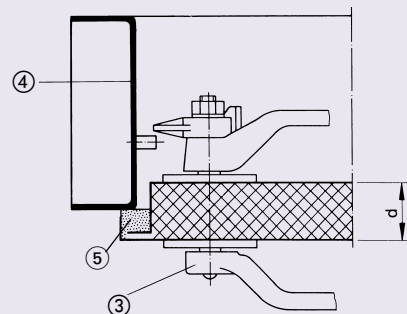


### Detail of Double Lever Locking Device

With angled section installation frame



With U-channel installation frame



- ① Door
- ② Rockwool insulation
- ③ Double lever locking device - not removeable
- ④ Installation frame, angle section or U-channel
- ⑤ Seal

# Construction

## Type ST-D · STV-D · XT-D · XTV-D

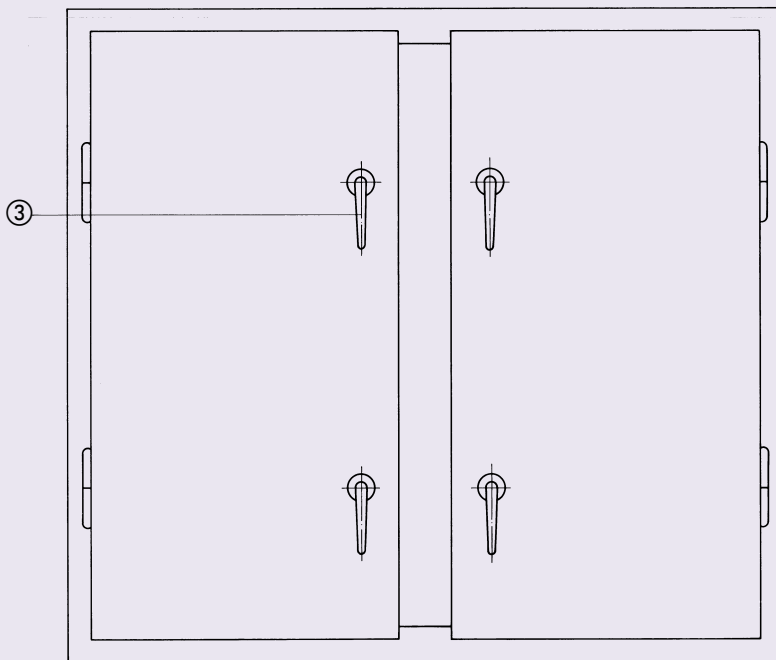
- ST-D**
- Double skinned door of galvanised sheet steel with rockwool insulation
  - Installation frame (angle section or U-channel) with screw-fixed centre mullion and galvanised builders cleats welded in position
  - Double lever locking devices (2 off per door) in diecast aluminium, enabling operation from both sides
  - APT rubber seal, temperature-resistant up to 90 °C
  - Maximum pressure differential 1000 Pa (pressure should push the door against the frame); leakage 4 m<sup>3</sup>/h
- XT-D**  
As for type ST-D, but also with additional acoustic treatment
- STV-D**  
As for type ST-D, but also with additional acoustic treatment
- XTV-D**  
As for type STV-D, but also with additional acoustic treatment

## STV-D

As for type ST-D, but:

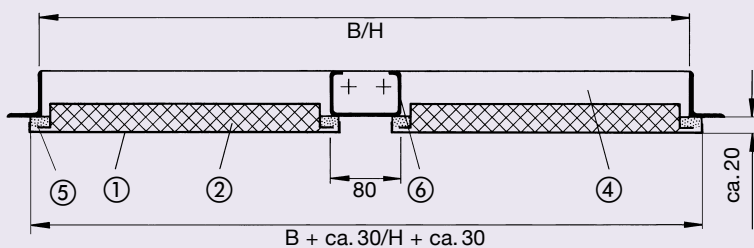
- Reinforced door construction
- Maximum pressure differential 2000 Pa (pressure should push the door against the frame); leakage 8 m<sup>3</sup>/h

## Type ST-D · STV-D XT-D · XTV-D



- ① Door
- ② Rockwool insulation
- ③ Double lever locking device
- ④ Installation frame, angle section or U-channel
- ⑤ Seal
- ⑥ Centre mullion

Detail of Double Lever Locking Device see page 3

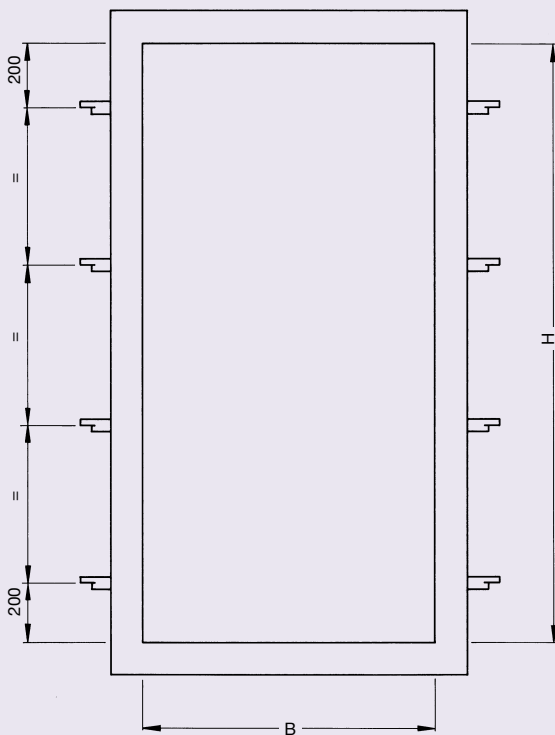


# Standard Sizes · Installation Details

## Standard Sizes

Type	B in mm	H in mm	Builders cleats on	
			B dimension	H dimension
ST	500	1500	-	3
STV	600	1600		3
XT	600	1800		4
XTV	800	1800		4
	940	1940		4
ST-D	1080	1500	1	4
STV-D	1280	1600		4
XT-D	1280	1800		5
XTV-D	1680	1800		5
	1960	1940		5

## Installation Details



Single door construction shown

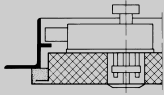
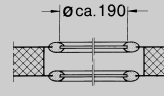
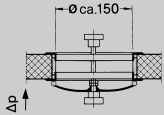
For double door construction,  
1 additional builders cleat  
on the B dimension



Installation frame Dimensions in mm		ST · STV XT · XTV	Type ST-D · STV-D XT-D · XTV-D
Angle section	a	45	45
	b	45	45
	c	5	5
U- channel	a	115 or 240	
	b	50	
	c	5	

# Product Range

Angle section installation Frame - single door - 45/45/5 Frame  
 - double door - 50/50/5 Frame

Construction	Complete with		Code
Basic Construction	Night Latch Lock		Z 01 *
	Glass Inspection Port		Z 02 *
	Pressure Relief Valve		Z 03 *
	Lock with Glass Inspection Port		Z 04 *
	Lock with Pressure Relieve Valve		Z 05 *
	Glass Inspection Port with Pressure Relief Valve		Z 06 *
	Lock with Glass Inspection Port and Pressure Relief Valve		Z 07 *
	Padlock Facility (excludes padlock)		Z 08 *
U-channel installation frame 115/50/4.5			13
U-channel installation frame 240/50/4.5			15

Painted/Stainless Steel construction available on request.  
 \*Double doors shall have the selected option on each leaf.

# Accessories · Technical Data

## Nomenclature

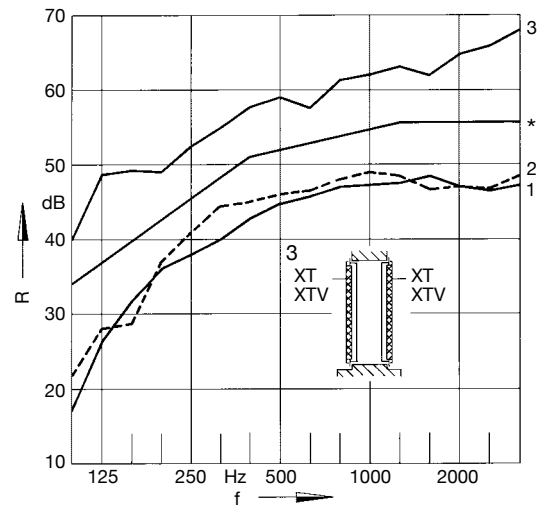
- R in dB: Sound reduction index
- $R_w$  in dB: Sound reduction index rating
- f in Hz: Frequency

Type	Graph	$R_w$ in dB
XT · XTV	1	43...46
XTD · XTV-D	2	44...47
XT · XTV (doors on both sides of wall opening)	3	58...61

### Note:

Before mortaring in place, align door carefully; when the door is closed, the seal must be in contact with the door frame all the way around.

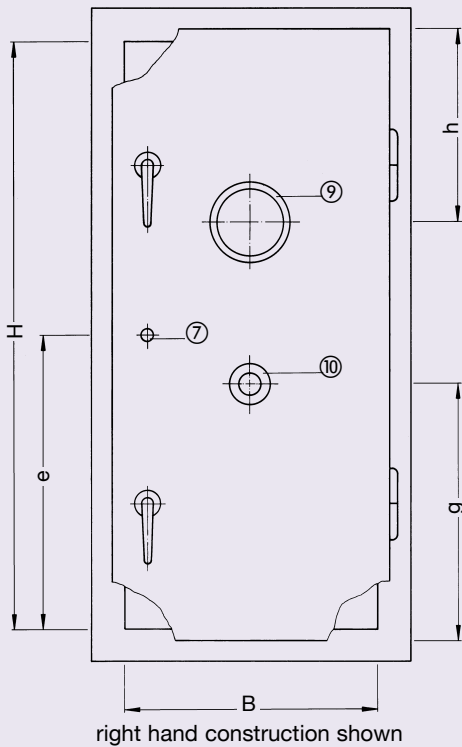
## Type XT · XTV · XT-D · XTV-D



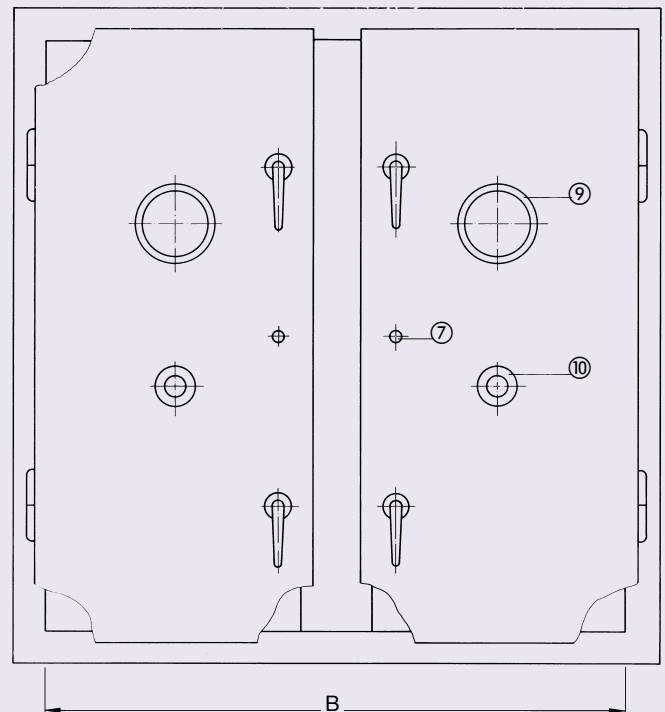
\* Reference curve from DIN EN ISO 717

## Arrangement of Accessories

### Type ST · STV XT · XTV



### Type ST-D · STV-D XT-D · XTV-D



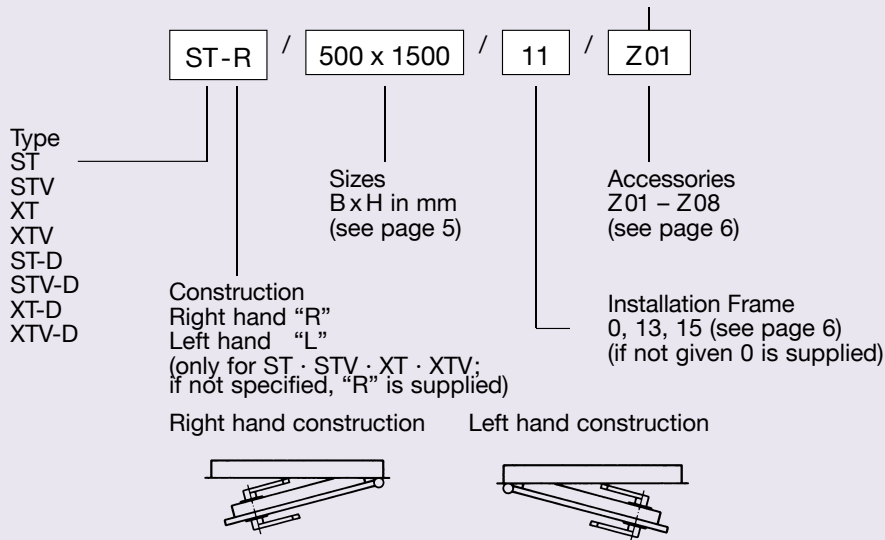
Dim. in mm	Type ST · STV XT · XTV ST-D · STV-D XT-D · XTV-D
e	H/2
g	H/2 - 190
h	570

- ⑦ Night Latch Lock
- ⑨ Glass inspection port
- ⑩ Pressure relief valve

# Order Details

Order Code

These codes do not need to be completed for standard products



## Specification Text

Low leakage steel doors comprising:

- Double skinned door in formed galvanised sheet steel to DIN EN 10142; with insulation of non-flammable rockwool to DIN 4102
- Installation frame with welded hinges and galvanised steel builders cleats
- Double lever locking devices enables operation from both sides, in diecast aluminium
- Peripheral profiled rubber seal of APT, temperature resistant up to 90 °C

Installation frame: see data on pages 5 and 6

Accessories: see data on pages 6 and 7

Type: see data on pages 3 and 4

## Order Example

Make: TROX

Type: ST-R / 500 x 1500 / 0 / Z01

Qty: 4